



SWISS SNOW TECHNOLOGIES

**YOUR COMPLETE SOLUTION PROVIDER FOR SNOWFARMING-
AND GLACIER PROTECTION-PROJECTS**

(a division of SMI Snow Makers AG group)
Rüttweg 15, CH-3608 Thun/Switzerland
Mobile +41 (0)79 310 27 36, e-mail smi@snowmakers.ch

IT'S ALL ABOUT SNOW

SNOW & ICE POLAR universal winch



A multi adaptive winch for highest demands and comfort

Technical requirements:

As standard, the carrier device should have 2 independent hydraulic channels for flow and return or at least one switchable hydraulic valve block that can be used to switch from rolling up and down to clamping. As an option, the valve block can be made operable from the driver's cab.

If the sliding frame is used sideways, it requires 3 hydraulic channels (option).

- wrapping function forward and return lines
- winch bar clamping function
- lateral slide frame (option)

SNOW & ICE POLAR universal winch consisting of:

- Ultra-modern all-round hydraulic system with all necessary valves, pressure reductions with adjustment options for fine adjustment of the clamping movements and the rotation speed.
Fits all hydraulic systems.
- Intermediate adapter plate with corresponding quick-change device.
Attention: The intermediate plate is made individually and charged separately.
Price: CHF 800.00 – 1,500.00 / € 850.00 – 1,550.00.
Possible carrier devices: Kässborer, Prinoth, excavator, tractor, municipal vehicles.
- Drive: High-quality hydraulic motor with special planetary gear for maximum pulling power.
- Movements: clamp open/close, rotate forward/backward.
Width of device: 4 m - 5.3 m or 6.3 m, with 3 width positions.

Tecnical data

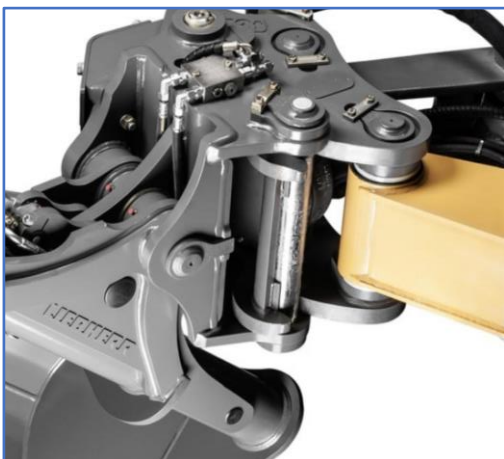
- Non-woven material roll width max. 4'000-6'000 mm
- Roll diameter max. 1'000 mm
- Rolling bar aluminium aluminium/steel 80/80/x5, length max. 6'500 mm
- Weight approx. 650 kg
- Lateral displacement +/- 250 mm (option)
- Carrier vehicle intermediate plate according to the definition of the coupling type

Oil quantities and connections

- Hydraulic drive for non-woven rolls double-acting min. 30 liter/min. 180 bar
- Clamping operation double-acting min. 15 liter/min. 180 bar
- If desired lateral slide frame (option) double-acting min. 15 liter/min. 180 bar

The pure winding device is a standard construction with a fixed adapter plate.
The intermediate plate with the corresponding holder for the carrier vehicle is screwed onto this plate.
This means that different carrier vehicles can be used with different intermediate plates.

Example images adapter on intermediate plate:



Example images and videos of carrier vehicles:



www.snowfarming.ch